

GRID NORTH - GEORGIA SPC
NAD83 - EAST ZONE

N/F
PERVEZ CHAUDHRY
PIN S21 000051 000
PB 14 PG 124
DB 2303 PG 188

N/F
A.B. McDOUGALD, JR. TRUST
PIN S22 000007 000
PB 4 PG 87

N/F
HAYWARD FIELDS
PIN S22 000005 000
PB 4 PG 87

S.M.P.
TOP: 210.37
E: 204.83 (W)
E: 204.76 (S)

Sta: 2+50.40
BEGIN CURB & GUTTER

Sta: 3+50.67
BEGIN CURB & GUTTER

| NO. | REVISION DESCRIPTION | BY | DATE |
|-----|----------------------|----|------|
| | | | |
| | | | |
| | | | |
| | | | |

GRAPHIC SCALE: 1" = 20'

EMC ENGINEERING SERVICES, INC.
 CIVIL
 MARINE
 ENVIRONMENTAL
 www.emc-eng.com
 PO Box 2086
 1211 Merchant Way, Suite 201
 Statesboro, GA 30458
 Ph: (912) 764-7022
 Fax: (912) 233-4580
 statesboro@emc-eng.com

STREETSCAPE PLAN
BLUE MILE STREETSCAPE - PHASE I
 1209TH G.M. DISTRICT
 STATESBORO, BULLOCH COUNTY, GEORGIA
 Prepared for:
 CITY OF STATESBORO

| | |
|--------------|------------|
| PROJECT NO.: | 18-2006 |
| DRAWN BY: | JRH |
| DESIGNED BY: | DWF |
| SURVEYED BY: | EMC |
| SURVEY DATE: | 03/07/18 |
| CHECKED BY: | CEP |
| SCALE: | 1" = 20' |
| DATE: | 06/03/2020 |

STREETSCAPE SPECIAL NOTES:

| [SYMBOL] | [QUANTITY] |
|----------|---|
| 1. | TAPERED DRIVEWAY W/ VALLEY GUTTER - GDOT DETAIL A1 (SEE DETAIL) |
| 2. | 10" STAMPED CONCRETE CROSSWALK - ROADWAY (SEE DETAIL) |
| 3. | 8" STAMPED CONCRETE CROSSWALK - DRIVEWAY (SEE DETAIL) |
| 4. | 4" STAMPED CONCRETE SIDEWALK - (POCKET PARK & BUS STOP) |
| 5. | CONCRETE SIDEWALK |
| 6. | LOOP BIKE RACK (SEE DETAIL) |
| 7. | TYPE "B" RAMP (GEORGIA DOT SPECIAL DETAIL A3) |
| 8. | TYPE "C" RAMP (GEORGIA DOT SPECIAL DETAIL A3) |
| 9. | TYPE "D" RAMP (GEORGIA DOT SPECIAL DETAIL A3) |
| 10. | CONCRETE CURB & GUTTER - 8" X 30", TP 2 (GDOT SPECIAL DETAIL 9032B) |
| 11. | BENCH (SEE DETAIL) |
| 12. | TRASH RECEPTACLE (SEE DETAIL) |
| 13. | DECORATIVE STREET LIGHT (SEE DETAIL) |
| 14. | CONCRETE HEADER CURB - TP 2 (GDOT SPECIAL DETAIL 9032B) |
| 15. | 8" CONCRETE PAVEMENT (PLAIN PORTLAND CEMENT, CLASS 3) |
| 16. | CONCRETE DOWELED INTEGRAL CURB, TP 1 (GDOT SPECIAL DETAIL 9032B) |
| 17. | 8' X 28' TRELIS ARBOR (SEE DETAIL) |
| 18. | 6' X 12' BUS STOP SHELTER (SEE DETAIL) |
| 19. | DECORATIVE PATTERNED PAVEMENT OVERLAY (INSTALLED PER MAN. SPEC.) |

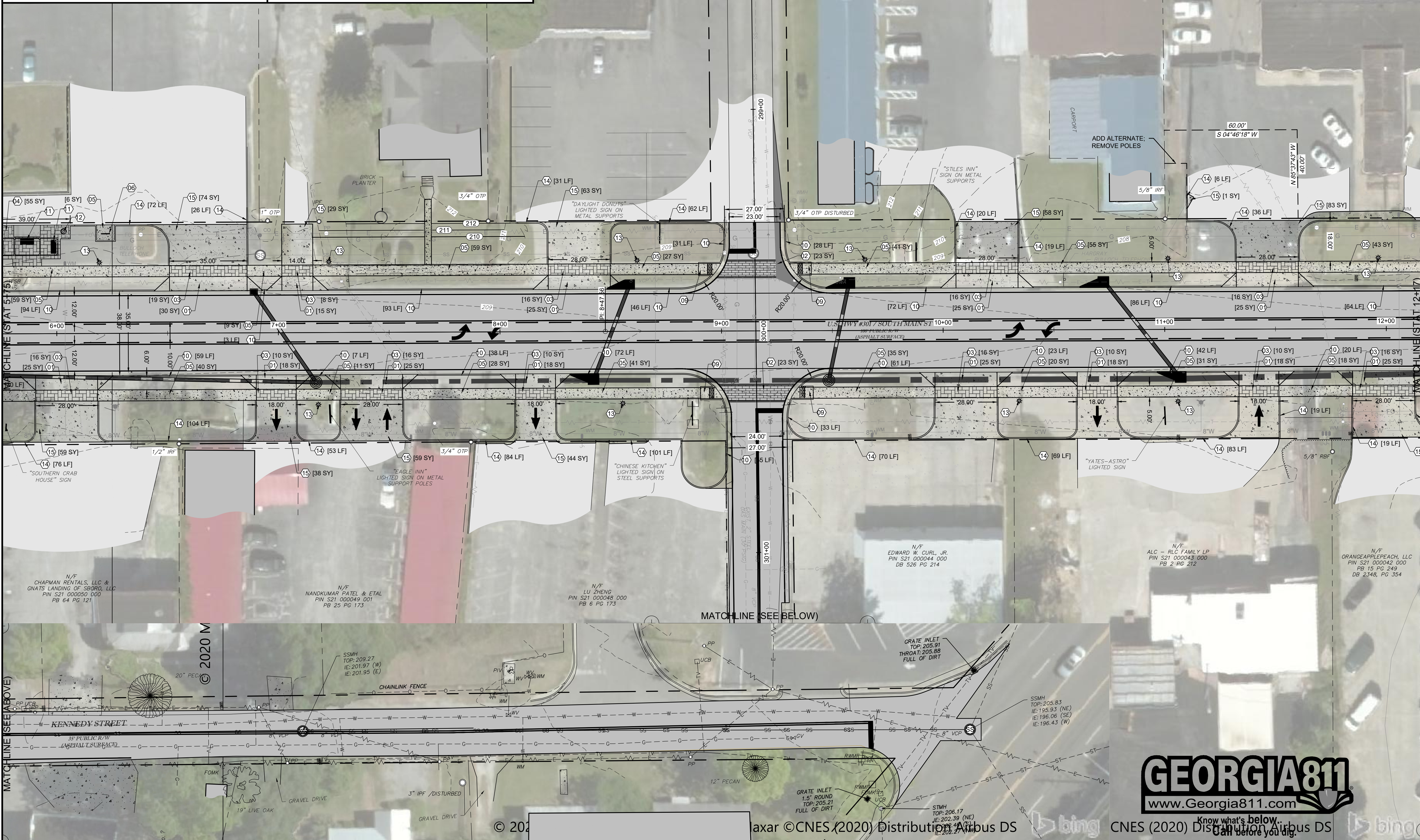


Know what's below.
Call before you dig.

© 2020 Micro

- STREETSCAPE SPECIAL NOTES:**
1. TAPERED DRIVEWAY W/ VALLEY GUTTER - GDOT DETAIL A1 (SEE DETAIL)
 2. 10" STAMPED CONCRETE CROSSWALK - ROADWAY (SEE DETAIL)
 3. 8" STAMPED CONCRETE CROSSWALK - DRIVEWAY (SEE DETAIL)
 4. 4" STAMPED CONCRETE SIDEWALK - (POCKET PARK & BUS STOP)
 5. CONCRETE SIDEWALK
 6. LOOP BIKE RACK (SEE DETAIL)
 7. TYPE "B" RAMP (GEORGIA DOT SPECIAL DETAIL A3)
 8. TYPE "C" RAMP (GEORGIA DOT SPECIAL DETAIL A3)
 9. TYPE "D" RAMP (GEORGIA DOT SPECIAL DETAIL A3)
 10. CONCRETE CURB & GUTTER - 8" X 30", TP 2 (GDOT SPECIAL DETAIL 9032B)
 11. BENCH (SEE DETAIL)

12. TRASH RECEPTACLE (SEE DETAIL)
13. DECORATIVE STREET LIGHT (SEE DETAIL)
14. CONCRETE HEADER CURB - TP 2 (GDOT SPECIAL DETAIL 9032B)
15. 8" CONCRETE PAVEMENT (PLAIN PORTLAND CEMENT, CLASS 3)
16. CONCRETE DOWELED INTEGRAL CURB, TP 1 (GDOT SPECIAL DETAIL 9032B)
17. 8' X 28" TRELLIS ARBOR (SEE DETAIL)
18. 6' X 12" BUS STOP SHELTER (SEE DETAIL)
19. DECORATIVE PATTERNED PAVEMENT OVERLAY (INSTALLED PER MAN. SPEC.)



| NO. | REVISION DESCRIPTION | BY | DATE |
|-----|----------------------|----|------|
| | | | |
| | | | |
| | | | |
| | | | |
| | | | |
| | | | |
| | | | |
| | | | |
| | | | |



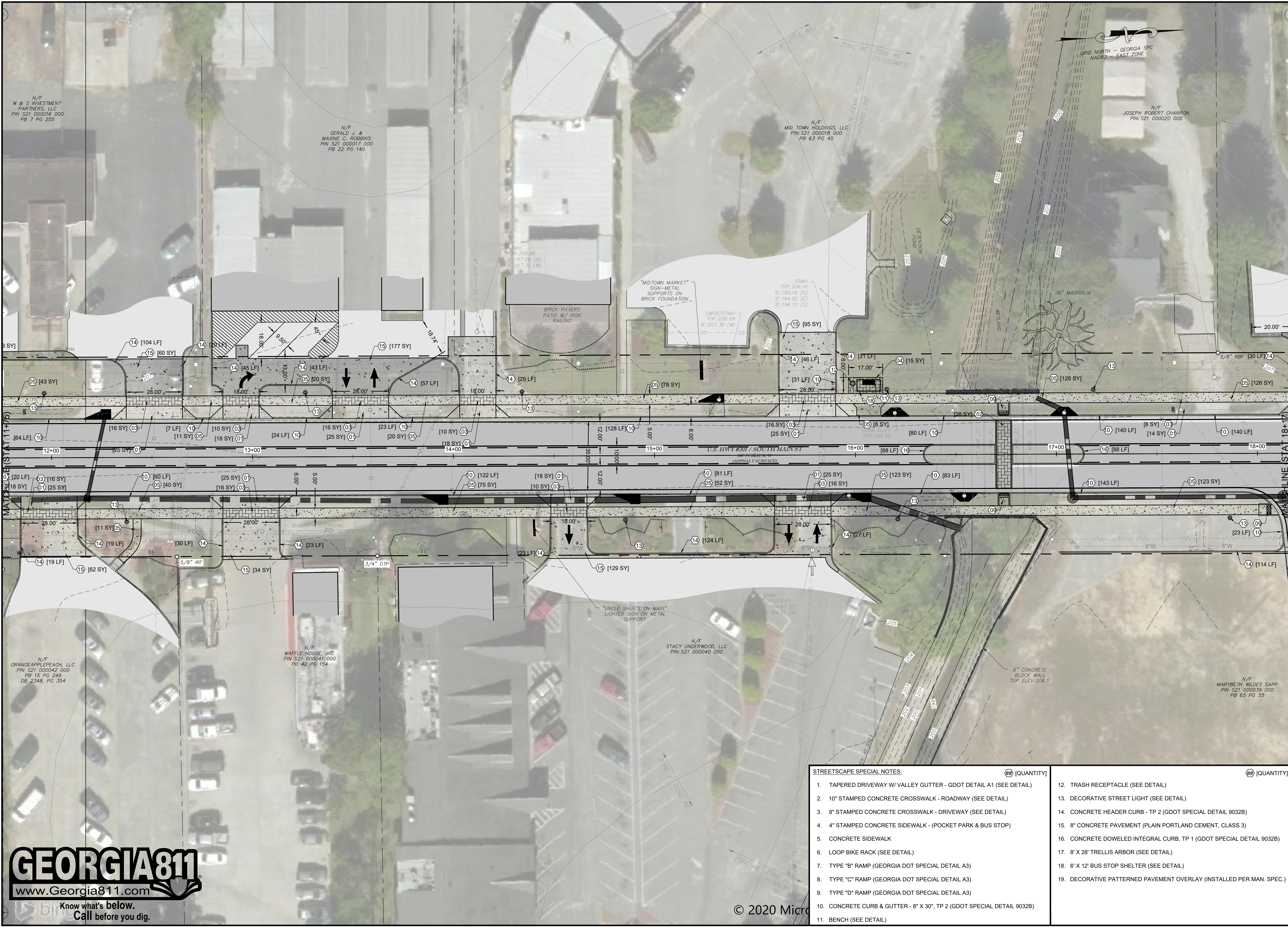
EMC ENGINEERING SERVICES, INC.
 CIVIL ENGINEERING
 ENVIRONMENTAL
 1211 Merchant Way, Suite 201
 Statesboro, GA 30458
 Ph: (912) 764-7022
 Fax: (912) 233-4560
 statesboro@emc-eng.com
 www.emc-eng.com

OFFICE LOCATIONS: ALBANY, ATLANTA, AUGUSTA, BRUNSWICK, COLUMBUS, SAVANNAH, STATESBORO, AND VALDOSTA.

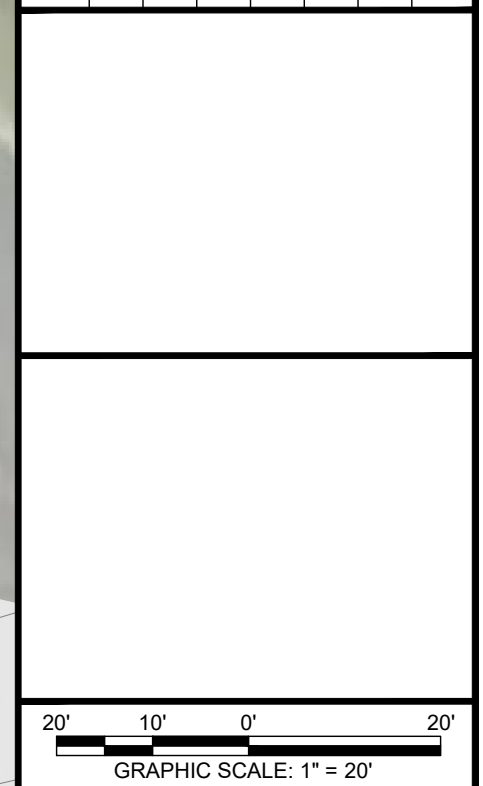
STREETSCAPE PLAN
BLUE MILE STREETSCAPE - PHASE I
 1209TH G.M. DISTRICT
 STATESBORO, BULLOCH COUNTY, GEORGIA
 Prepared for:
 CITY OF STATESBORO

| | |
|--------------|------------|
| PROJECT NO.: | 18-2006 |
| DRAWN BY: | JRH |
| DESIGNED BY: | DWF |
| SURVEYED BY: | EMC |
| SURVEY DATE: | 03/07/18 |
| CHECKED BY: | CEP |
| SCALE: | 1" = 20' |
| DATE: | 06/03/2020 |





| NO. | REVISION DESCRIPTION | BY | DATE |
|-----|----------------------|----|------|
| | | | |
| | | | |
| | | | |



EMC ENGINEERING SERVICES, INC.
 PO Box 2086
 1211 Merchant Way, Suite 201
 Statesboro, GA 30458
 Ph: (912) 764-7022
 Fax: (912) 233-4580
 statesboro@emc-eng.com
 www.emc-eng.com

CIVIL
 MARINE
 ENVIRONMENTAL

OFFICE LOCATIONS: ALBANY, ATLANTA, AUGUSTA, BRUNSWICK, COLUMBUS, SAVANNAH, STATESBORO, AND VALDOSTA

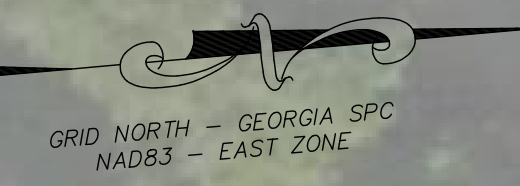
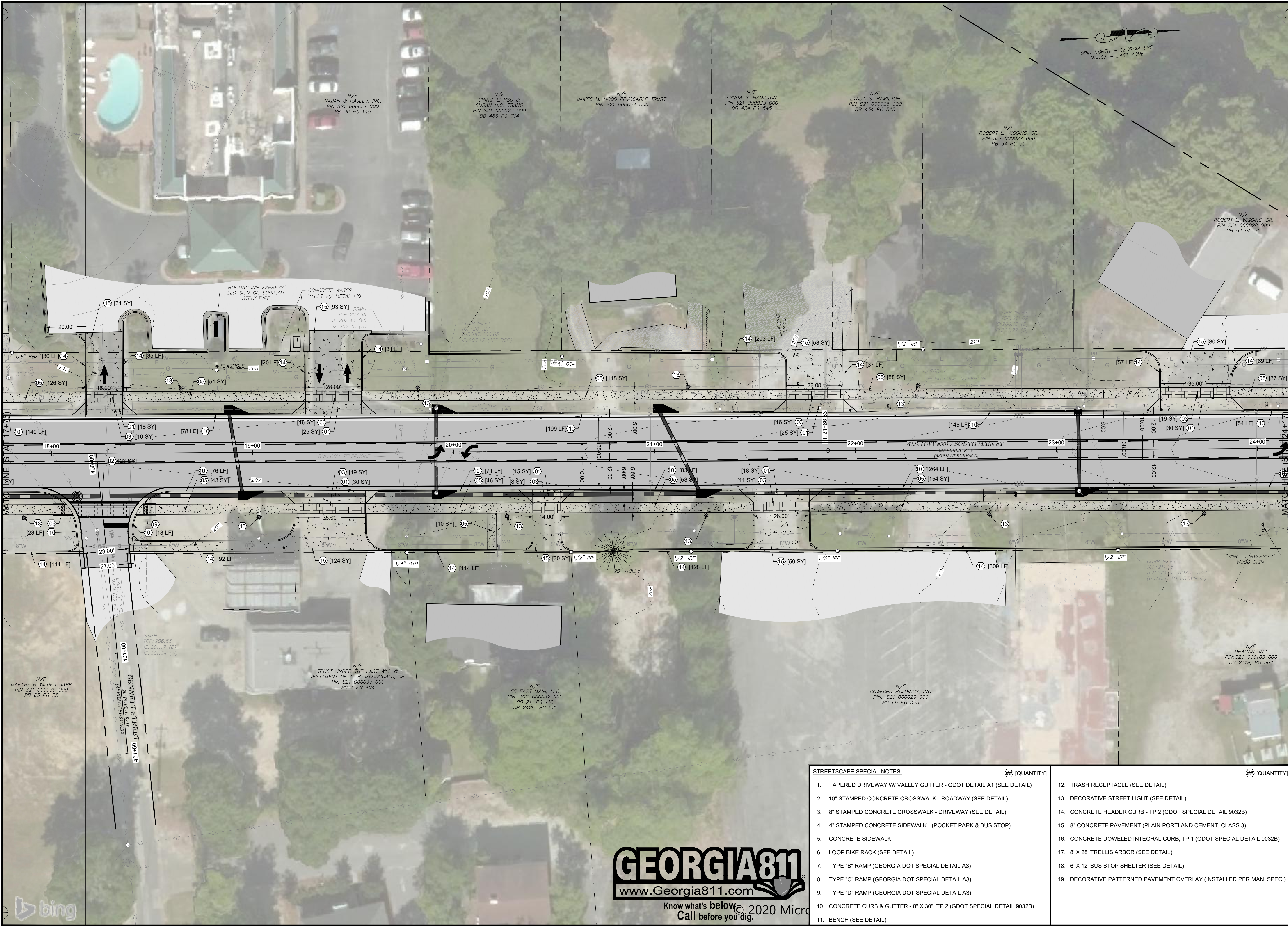
STREETSCAPE PLAN
BLUE MILE STREETSCAPE - PHASE I
 1209TH G.M. DISTRICT
 STATESBORO, BULLOCH COUNTY, GEORGIA
 Prepared for:
 CITY OF STATESBORO

| | |
|--------------|------------|
| PROJECT NO.: | 18-2006 |
| DRAWN BY: | JRH |
| DESIGNED BY: | DWF |
| SURVEYED BY: | EMC |
| SURVEY DATE: | 03/07/18 |
| CHECKED BY: | CEP |
| SCALE: | 1" = 20' |
| DATE: | 06/03/2020 |

SHEET
10
 OF 31

| STREETSCAPE SPECIAL NOTES: | [QUANTITY] |
|---|------------|
| 1. TAPERED DRIVEWAY W/ VALLEY GUTTER - GDOT DETAIL A1 (SEE DETAIL) | |
| 2. 10" STAMPED CONCRETE CROSSWALK - ROADWAY (SEE DETAIL) | |
| 3. 8" STAMPED CONCRETE CROSSWALK - DRIVEWAY (SEE DETAIL) | |
| 4. 4" STAMPED CONCRETE SIDEWALK - (POCKET PARK & BUS STOP) | |
| 5. CONCRETE SIDEWALK | |
| 6. LOOP BIKE RACK (SEE DETAIL) | |
| 7. TYPE "B" RAMP (GEORGIA DOT SPECIAL DETAIL A3) | |
| 8. TYPE "C" RAMP (GEORGIA DOT SPECIAL DETAIL A3) | |
| 9. TYPE "D" RAMP (GEORGIA DOT SPECIAL DETAIL A3) | |
| 10. CONCRETE CURB & GUTTER - 8" X 30", TP 2 (GDOT SPECIAL DETAIL 9032B) | |
| 11. BENCH (SEE DETAIL) | |
| 12. TRASH RECEPTACLE (SEE DETAIL) | |
| 13. DECORATIVE STREET LIGHT (SEE DETAIL) | |
| 14. CONCRETE HEADER CURB - TP 2 (GDOT SPECIAL DETAIL 9032B) | |
| 15. 8" CONCRETE PAVEMENT (PLAIN PORTLAND CEMENT, CLASS 3) | |
| 16. CONCRETE DOWELED INTEGRAL CURB, TP 1 (GDOT SPECIAL DETAIL 9032B) | |
| 17. 8' X 28' TRELIS ARBOR (SEE DETAIL) | |
| 18. 6' X 12' BUS STOP SHELTER (SEE DETAIL) | |
| 19. DECORATIVE PATTERNED PAVEMENT OVERLAY (INSTALLED PER MAN. SPEC.) | |

GEORGIA811
 www.Georgia811.com
 Know what's below.
 Call before you dig.



| NO. | REVISION DESCRIPTION | BY | DATE |
|-----|----------------------|----|------|
| | | | |
| | | | |
| | | | |
| | | | |



EMC ENGINEERING SERVICES, INC.
 PO Box 2086
 1211 Merchant Way, Suite 201
 Statesboro, GA 30458
 Ph: (912) 764-7022
 Fax: (912) 233-4580
 statesboro@emc-eng.com
 www.emc-eng.com

CIVIL MARINE ENVIRONMENTAL

OFFICE LOCATIONS: ALBANY, ATLANTA, AUGUSTA, BRUNSWICK, COLUMBUS, SAVANNAH, STATESBORO, AND VALDOSTA.

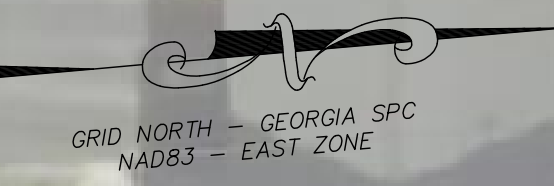
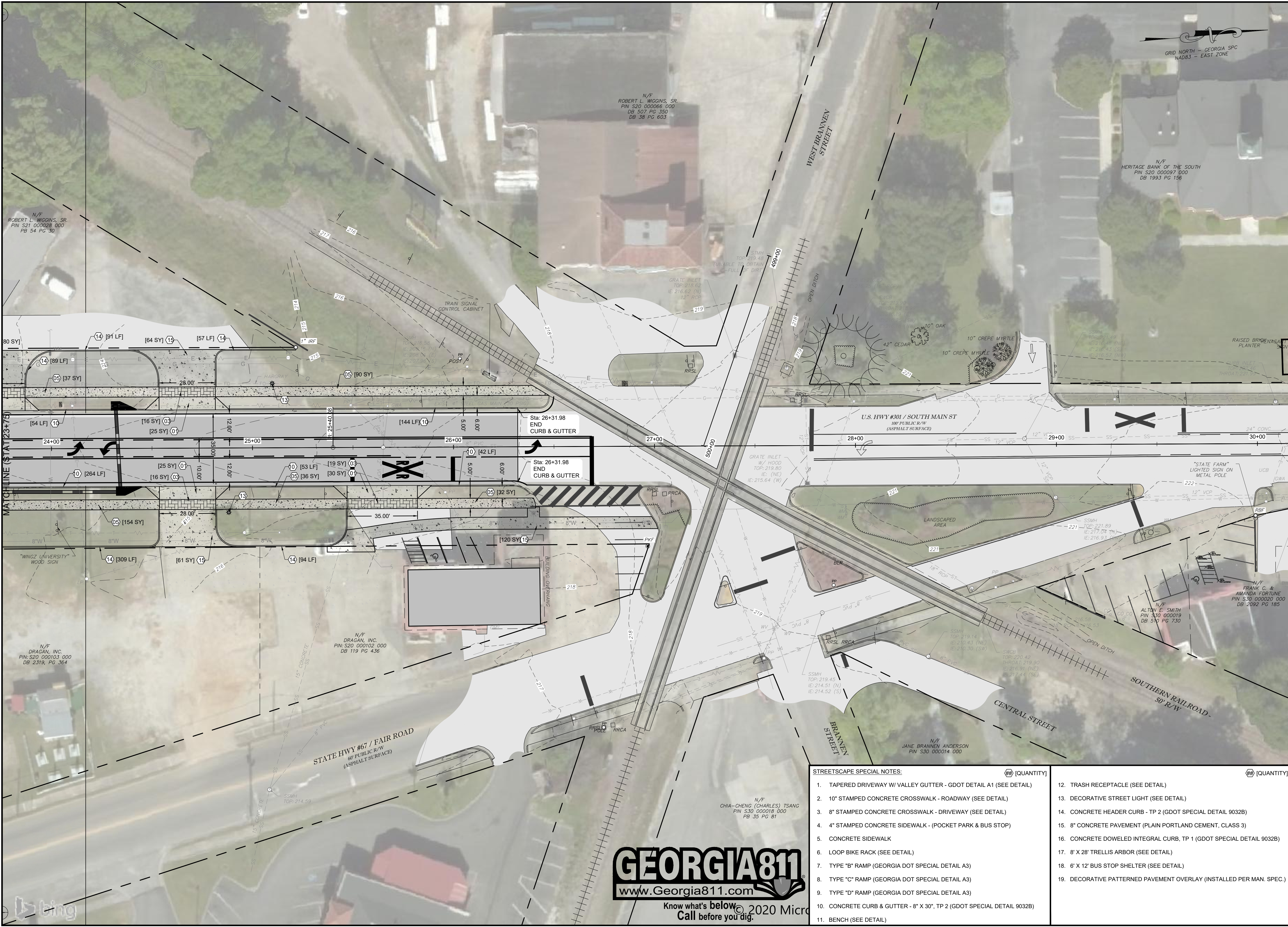
STREETSCAPE PLAN
BLUE MILE STREETSCAPE - PHASE I
 1209TH G.M. DISTRICT
 STATESBORO, BULLOCH COUNTY, GEORGIA
 Prepared for:
CITY OF STATESBORO

| | |
|--------------|------------|
| PROJECT NO.: | 18-2006 |
| DRAWN BY: | JRH |
| DESIGNED BY: | DWF |
| SURVEYED BY: | EMC |
| SURVEY DATE: | 03/07/18 |
| CHECKED BY: | CEP |
| SCALE: | 1" = 20' |
| DATE: | 06/03/2020 |

SHEET 11 OF 31

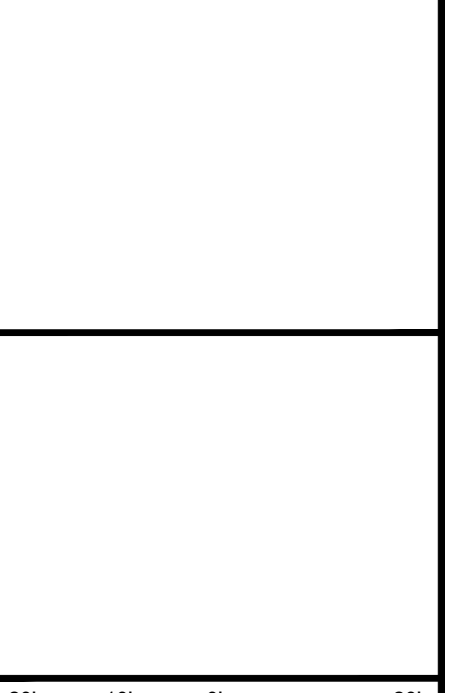
| STREETSCAPE SPECIAL NOTES: | [QUANTITY] |
|---|------------|
| 1. TAPERED DRIVEWAY W/ VALLEY GUTTER - GDOT DETAIL A1 (SEE DETAIL) | |
| 2. 10" STAMPED CONCRETE CROSSWALK - ROADWAY (SEE DETAIL) | |
| 3. 8" STAMPED CONCRETE CROSSWALK - DRIVEWAY (SEE DETAIL) | |
| 4. 4" STAMPED CONCRETE SIDEWALK - (POCKET PARK & BUS STOP) | |
| 5. CONCRETE SIDEWALK | |
| 6. LOOP BIKE RACK (SEE DETAIL) | |
| 7. TYPE "B" RAMP (GEORGIA DOT SPECIAL DETAIL A3) | |
| 8. TYPE "C" RAMP (GEORGIA DOT SPECIAL DETAIL A3) | |
| 9. TYPE "D" RAMP (GEORGIA DOT SPECIAL DETAIL A3) | |
| 10. CONCRETE CURB & GUTTER - 8" X 30", TP 2 (GDOT SPECIAL DETAIL 9032B) | |
| 11. BENCH (SEE DETAIL) | |
| 12. TRASH RECEPTACLE (SEE DETAIL) | |
| 13. DECORATIVE STREET LIGHT (SEE DETAIL) | |
| 14. CONCRETE HEADER CURB - TP 2 (GDOT SPECIAL DETAIL 9032B) | |
| 15. 8" CONCRETE PAVEMENT (PLAIN PORTLAND CEMENT, CLASS 3) | |
| 16. CONCRETE DOWELED INTEGRAL CURB, TP 1 (GDOT SPECIAL DETAIL 9032B) | |
| 17. 8' X 28' TRELIS ARBOR (SEE DETAIL) | |
| 18. 6' X 12' BUS STOP SHELTER (SEE DETAIL) | |
| 19. DECORATIVE PATTERNED PAVEMENT OVERLAY (INSTALLED PER MAN. SPEC.) | |





GRID NORTH - GEORGIA SPC
NAD83 - EAST ZONE

| NO. | REVISION DESCRIPTION | BY | DATE |
|-----|----------------------|----|------|
| | | | |
| | | | |
| | | | |
| | | | |
| | | | |
| | | | |
| | | | |
| | | | |
| | | | |
| | | | |



EMC ENGINEERING SERVICES, INC.
 PO Box 2086
 1211 Merchant Way, Suite 201
 Statesboro, GA 30458
 Ph: (912) 764-7022
 Fax: (912) 233-4580
 statesboro@emc-eng.com
 www.emc-eng.com

CIVIL MARINE ENVIRONMENTAL

OFFICE LOCATIONS: ALBANY, ATLANTA, AUGUSTA, BRUNSWICK, COLUMBUS, SAVANNAH, STATESBORO, AND VALDOSTA

STREETSCAPE PLAN
BLUE MILE STREETSCAPE - PHASE I
 1209TH G.M. DISTRICT
 STATESBORO, BULLOCH COUNTY, GEORGIA
 Prepared for:
 CITY OF STATESBORO

| | |
|--------------|------------|
| PROJECT NO.: | 18-2006 |
| DRAWN BY: | JRH |
| DESIGNED BY: | DWF |
| SURVEYED BY: | EMC |
| SURVEY DATE: | 03/07/18 |
| CHECKED BY: | CEP |
| SCALE: | 1" = 20' |
| DATE: | 06/03/2020 |

- STREETSCAPE SPECIAL NOTES:**
- | | |
|---|--|
| 1. TAPERED DRIVEWAY W/ VALLEY GUTTER - GDOT DETAIL A1 (SEE DETAIL) | 12. TRASH RECEPTACLE (SEE DETAIL) |
| 2. 10" STAMPED CONCRETE CROSSWALK - ROADWAY (SEE DETAIL) | 13. DECORATIVE STREET LIGHT (SEE DETAIL) |
| 3. 8" STAMPED CONCRETE CROSSWALK - DRIVEWAY (SEE DETAIL) | 14. CONCRETE HEADER CURB - TP 2 (GDOT SPECIAL DETAIL 9032B) |
| 4. 4" STAMPED CONCRETE SIDEWALK - (POCKET PARK & BUS STOP) | 15. 8" CONCRETE PAVEMENT (PLAIN PORTLAND CEMENT, CLASS 3) |
| 5. CONCRETE SIDEWALK | 16. CONCRETE DOWELED INTEGRAL CURB, TP 1 (GDOT SPECIAL DETAIL 9032B) |
| 6. LOOP BIKE RACK (SEE DETAIL) | 17. 8' X 28' TRELIS ARBOR (SEE DETAIL) |
| 7. TYPE "B" RAMP (GEORGIA DOT SPECIAL DETAIL A3) | 18. 6' X 12' BUS STOP SHELTER (SEE DETAIL) |
| 8. TYPE "C" RAMP (GEORGIA DOT SPECIAL DETAIL A3) | 19. DECORATIVE PATTERNED PAVEMENT OVERLAY (INSTALLED PER MAN. SPEC.) |
| 9. TYPE "D" RAMP (GEORGIA DOT SPECIAL DETAIL A3) | |
| 10. CONCRETE CURB & GUTTER - 8" X 30", TP 2 (GDOT SPECIAL DETAIL 9032B) | |
| 11. BENCH (SEE DETAIL) | |

GEORGIA811
 www.Georgia811.com
 Know what's below. Call before you dig.
 © 2020 Micro

N/F
ROBERT L. WIGGINS, SR.
PIN S21 000028 000
DB 54 PG 30

N/F
ROBERT L. WIGGINS, SR.
PIN S20 000066 000
DB 507 PG 350
DB 38 PG 603

N/F
HERITAGE BANK OF THE SOUTH
PIN S20 000097 000
DB 1993 PG 156

MATCHLINE (STAT 23+75)

N/F
DRAGAN, INC.
PIN: S20 000103 000
DB 2319, PG 364

N/F
DRAGAN, INC.
PIN: S20 000102 000
DB 119 PG 436

N/F
CHIA-CHENG (CHARLES) TSANG
PIN S30 000018 000
PB 33 PG 81

N/F
JANE BRANNEN ANDERSON
PIN S30 000014 000

N/F
FRANK C. & AMANDA FORTUNE
PIN S30 000019 000
DB 2092 PG 185

N/F
ALTON E. SMITH
PIN S30 000019 000
DB 510 PG 730